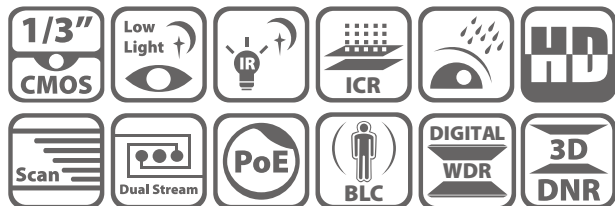


HDS-2020IRP (2.0MP) HDS-2032IRP (3.0MP)

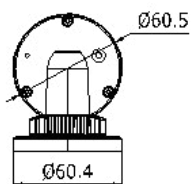
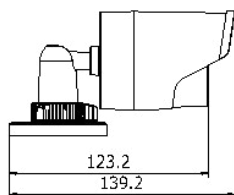
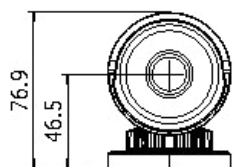
IR Mini Bullet Network Camera



Key features

- 2MP / 3MP high resolution
- HD real-time video
- 3D DNR & DWDR & BLC
- IR LEDs: up to 30m
- IP66
- PoE
- Compact design
- Bracket included

Dimensions



Unit: mm

| | HDS-2020IRP | HDS-2032IRP |
|-----------------------------|--|--|
| Camera | | |
| Image sensor | 1/3" progressive scan CMOS | |
| Min. illumination | 0.01 lux @F1.2, AGC ON, 0 lux with IR | 0.07 lux @F1.2, AGC ON, 0 lux with IR |
| Shutter time | 1/3s ~ 1/100,100s | |
| Lens | 4mm @ F2.0 (6mm optional) Angle of view: 79°(4mm), 49°(6mm) | 4mm @ F2.0 (6mm optional) 1920 × 1080: Angle of view: 79°(4mm), 49°(6mm) 2048 × 1536: Angle of view: 70°(4mm),43.3°(6mm) |
| Lens mount | M12 | |
| Day & night | ICR | |
| Digital noise reduction | 3D DNR | |
| Wide dynamic range | Digital WDR | |
| Compression Standard | | |
| Video compression | H.264 / MJPEG | |
| H.264 codec profile | Main profile | |
| Bit rate | 32 Kbps ~ 16 Mbps | |
| Dual stream | Yes | |
| Image | | |
| Max. Image Resolution | 1920 × 1080 | 2048 × 1536 |
| Frame rate | 50Hz: 25fps (1920 × 1080), 25fps (1280 × 720) 60Hz: 30fps (1920 × 1080), 30fps (1280 × 720) | 50Hz: 20fps (2048 × 1536), 25fps (1920 × 1080), 25fps (1280 × 720) 60Hz: 20fps (2048 × 1536), 30fps (1920 × 1080), 30fps (1280 × 720) |
| Image settings | Saturation, brightness, sharpness, contrast, sharpness adjustable through client software or web browser | |
| BLC | Yes, zone configurable | |
| Network | | |
| Network storage | NAS | |
| Alarm trigger | Motion detection, line crossing detection, tampering alarm, scene change detection, face detection, intrusion detection | |
| Protocols | TCP/IP, ICMP, HTTP, HTTPS, FTP, DHCP, DNS, DDNS, RTP, RTSP, RTCP, PPPoE, NTP, UPnP, SMTP, SNMP, IGMP, 802.1X, QoS, IPv6, Bonjour | |
| System compatibility | ONVIF, PSIA, CGI | |
| General functionalities | User Authentication, watermark, reset button | |
| Interface | | |
| Communication interface | 1 RJ45 10 M / 100 M Ethernet interface | |
| General | | |
| Operating conditions | -30 °C ~ 60 °C (-22°F ~ 140 °F) humidity 95% or less (non-condensing) | |
| Power supply | 12 VDC ± 10% , PoE (802.3af) | |
| Power consumption | Max. 5W (max. 7W with ICR on) | |
| Weather proof rating | IP66 | |
| IR range | Up to 30m | |
| Dimension | 60.4 × 76.9 × 139.2mm | |
| Weight | 500g | |